



Meet

CHIPSAPP TECHNOLOGIES PVT LTD

Where ideas take flight, solutions
find their voice, and dreams
transform into reality.



Chipsapp Technologies Pvt Ltd.



- Founded on February 7th, 2013, headquartered in Bengaluru with a corporate office in Shimoga.
- Initially focused on creative web and mobile applications, e-commerce etc-
- Recognized challenges faced local merchants, commission agents and cooperative bodies in the Malnad region which has led to the development of a tailored software solution.
- Achieved high client satisfaction with the implemented solution.
- Rolled out a comprehensive solution to more than 80% of local businesses, enhancing efficiency in business management workflows.
- Implemented the solution seamlessly in huge cooperative bodies and organizations, offering robust finance management and personalized modules to streamline their operations.
- Delivering tailor-made ERP solutions to cooperative societies, supermarkets, and agricultural merchants throughout Karnataka.
- Committed to providing continuous support, with a dedicated team of highly skilled software engineers and offering steady assistance.
- Offering an integrated suite of business applications including ERP tools covering finance, HR, distribution, manufacturing, service, and supply chain management.
- Specialized in developing custom banking solutions for cooperative bodies, encompassing basic banking systems and additional segments like commission agents, fertilizer sales, etc.
- Providing end-to-end ERP solutions for industries, ensuring comprehensive operational support.

The Art of Project Alchemy

Experience the transformative power of our project execution, where ideas are forged into reality through a fusion of strategy, innovation, and expertise.



Analysis



Comprehension



Proposition



Designing



Development



Deployment

Our Clients - A testament to our widespread impact

*Across the verdant expanse of Karnataka,
our presence resonates with over 300+
valued partnerships.*

From the verdant plantations to the bustling urban markets, our diverse clientele includes :



Chipsapp Technologies Pvt Ltd.,

TRADE APP

Feature Showcase: Unveiling the Power Within



**REST API
Integration**



**GST, E-way Bill
And E-invoice
Generation**



SMS Integration



**WhatsApp
Integration**



**Webcam
Integration**



**Biometric
Integration**



Excel Upload



Mail Integration



TRADE APP

Feature Showcase: Unveiling the Power Within



Hybrid And Cloud
Integration



Informative
Dashboard



Multiple Branch
Integration



Pigmy Machine
Interface



Mobile App For
Pigmy Collection



Aadhar-Based OTP
Authentication



CIBIL Integration



UPI Integration



Chipsapp Technologies Pvt Ltd.,

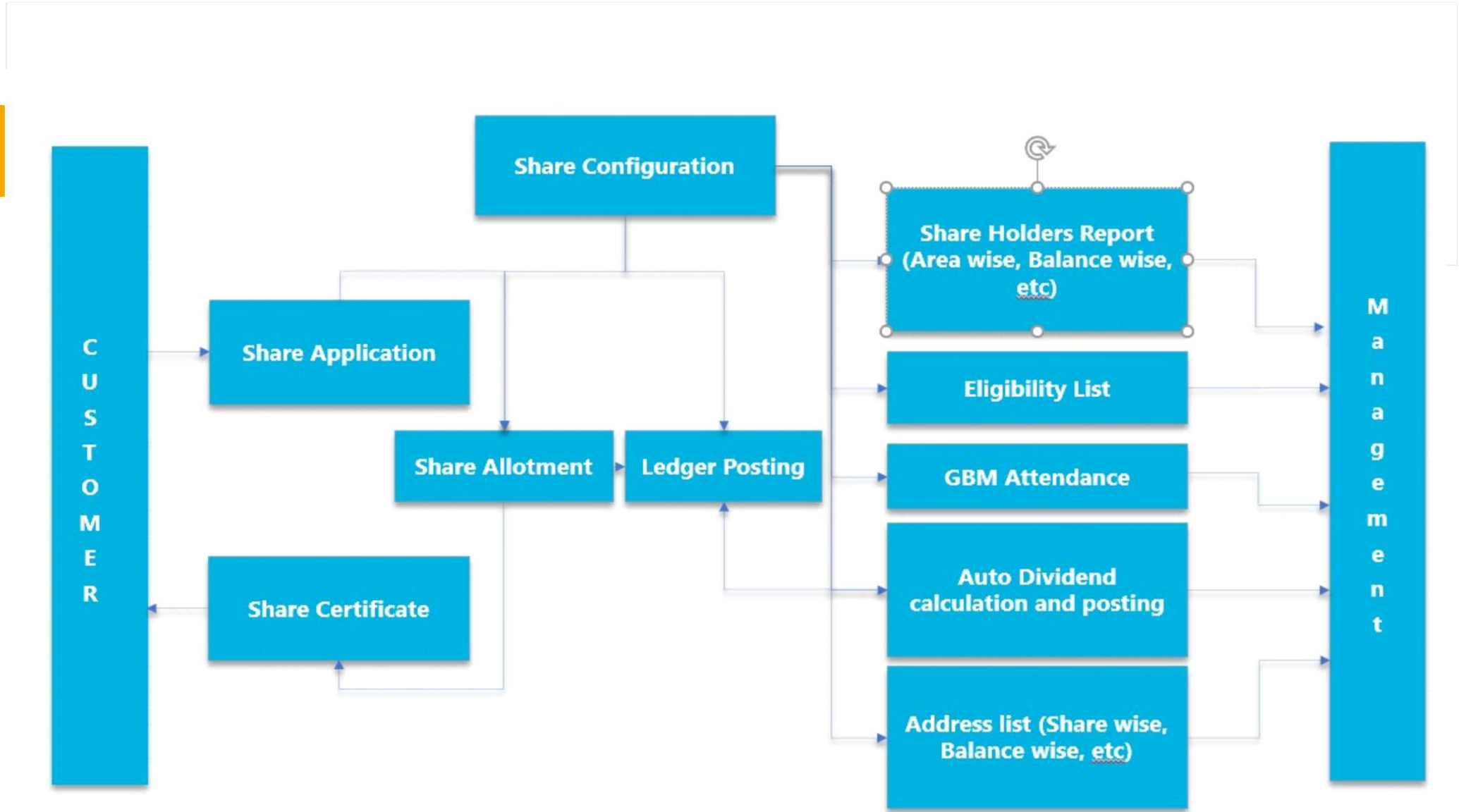
SHARE MANAGEMENT

Shares serve as the bedrock of any cooperative organization, encompassing a spectrum of membership categories such as Co-Members and Nominal Members. Additionally, shares may be stratified into distinct classes, such as A-Class and B-Class, contingent upon their face value. Consequently, it is imperative to establish a framework for configuring diverse classifications of shares, ensuring flexibility and alignment with the organization's objectives.

Features:

- Automatic Share Value and charges calculation based on each share rate and number of shares.
- Automatic Generation of share number.
- Automatic share allotment.
- On Approval from the board, the share is automatically transferred from Share Suspense to Share with appropriate postings and voucher print.
- Dividend Calculation based on bye-law rules.
- Automatic Dividend posting to various accounts as mentioned in the share application.
- Ready share certificate print, customized on the existing pre-printed stationary.
- One-click additional share creation.
- Share report with filters for date, type and customer.
- Share Open and Close reports for the financial year useful in auditing.
- Share Transfers made hassle-free.





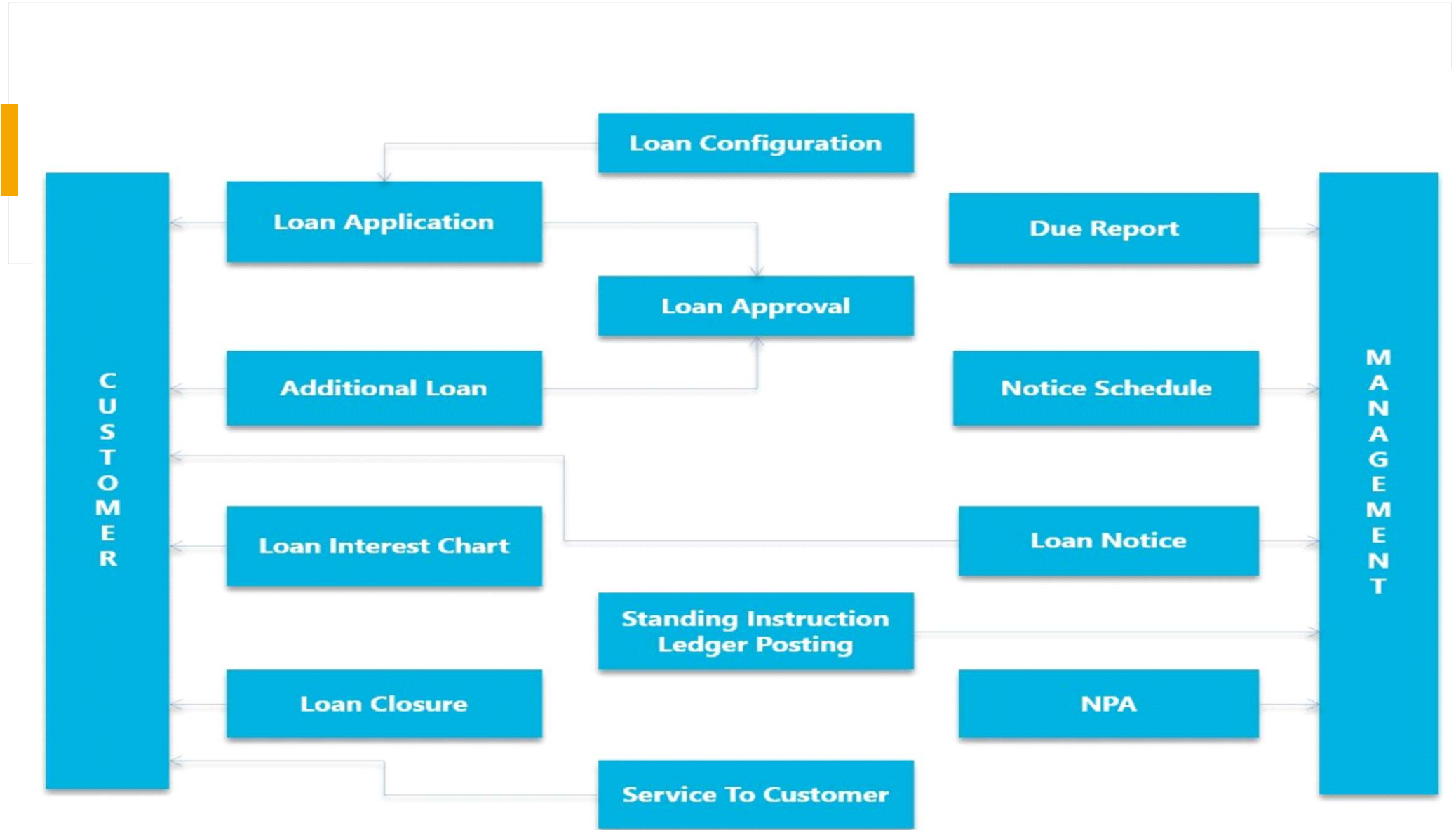
LOAN MANAGEMENT

Features :

- Loan Application File Upload.
- Image upload of any security such as gold etc.
- Surety details.
- Joint Account details.
- The appraiser and purpose of the loan can be mentioned.
- Loans on Deposit with automatic rate calculations.
- Due Report with a list of due loans with balance and interest.
- The loan Interest chart calculates the EMI to be paid by the customer and their distributions so that it is very transparent.
- Provisional Posting as Standing instruction, i.e. recurring over a period.
- Penal calculation if any after the due of the loan.
- Multilingual loan notices in Kannada and English to be given to the customer.
- NOCs for the loans closed.
- Loan Closure.
- Dues as reminders.
- Suit Management.
- DCB Reports.



Loan management encompass a diverse array of categories, including crop loans, gold loans, vehicle loans, and loans against deposits. Each loan is underwritten with the assurance of a guarantor or surety, ensuring the cooperative's security in the event of repayment. This prudent approach safeguards both the cooperative's interests and the financial well-being of its members.



DEPOSIT MANAGEMENT

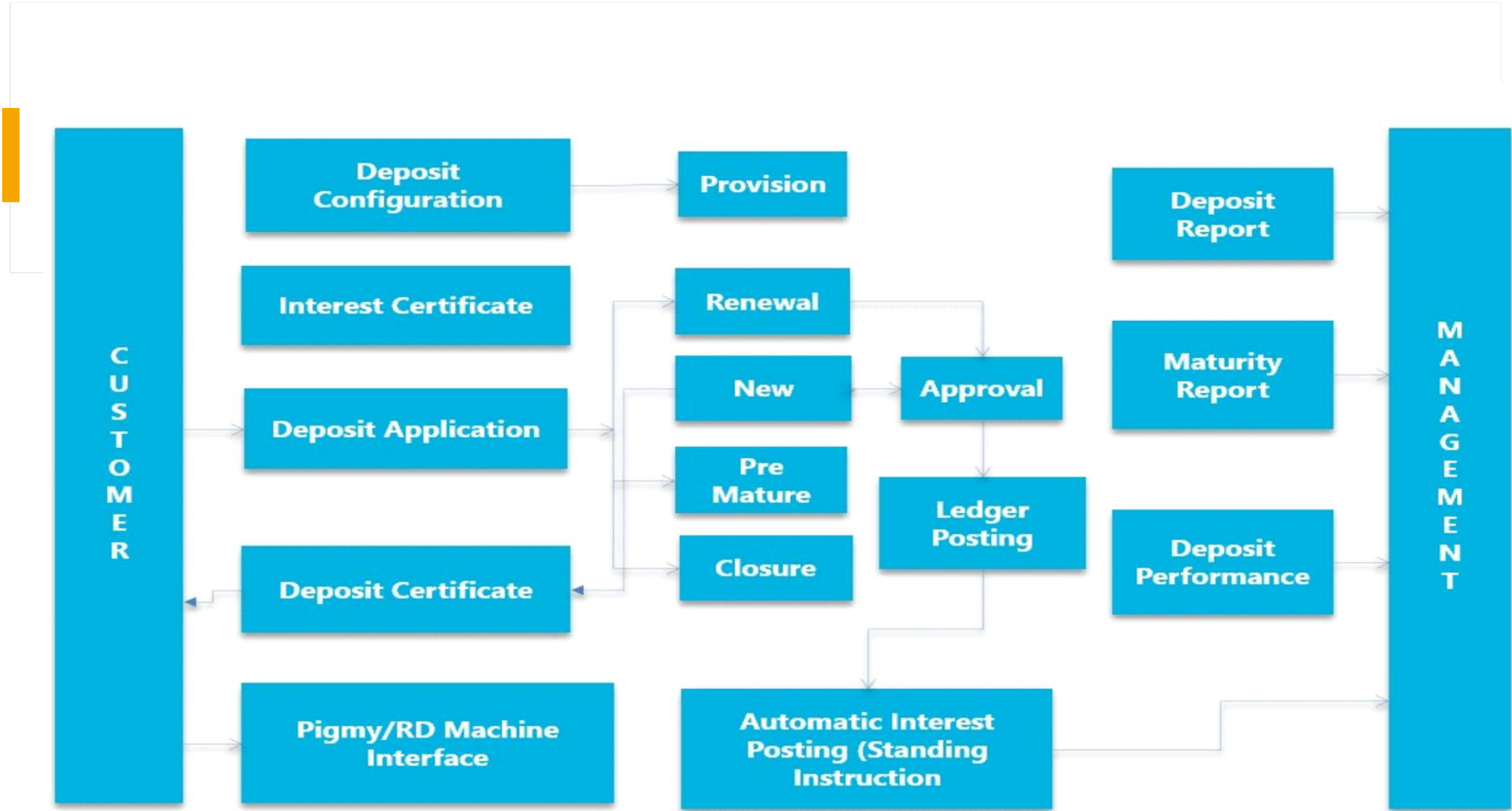
Features :

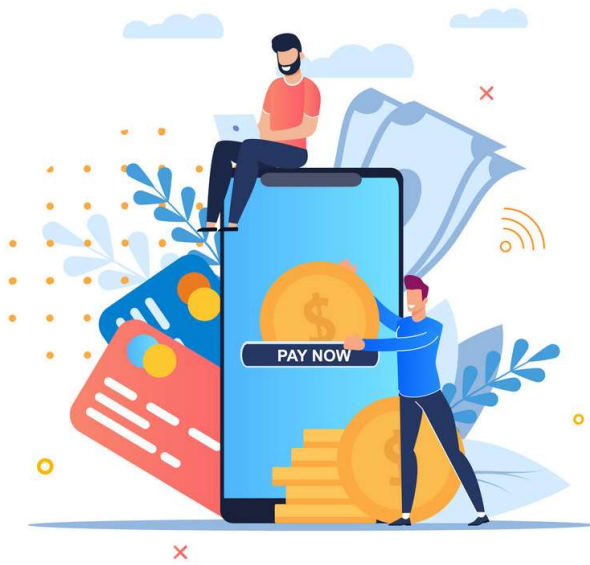
- Deposit Application File Upload.
- Deposit Renewal, Closure and Pre-Closure options.
- Joint Account details.
- Maturity Amount Calculation based on period, rate of interest and deposit amount.
- Monthly/daily deposit option.
- Deposit Bond and Voucher Print.
- Automatic ledger posting after approval.
- While Deposit Renewal or closure interest provision and interest to be paid are automatically calculated.
- Reduced interest calculation and automatic posting on pre-closure.
- Provisional Posting as Standing instruction, i.e. recurring over a period.
- Maturity Reminders as notifications.
- Maturity report showing a list of deposits getting matured for the given period.
- Interest certificate showing interest paid/accrued of all deposits for a customer. This is useful for customers while IT Filing.
- Mobile Application for Collection of Pigmy/RD.
- Agent Commission calculation.
- Machine Interface for Pigmy/RD Collection.
- Compounding/Simple Interest Calculations
- MSA & CA Account Management.
- Operation Instruction.
- CA Yearly Charges Automatic Posting.
- Inoperative account management.
- 15G/15H.
- TDS on Interest Paid on Deposits.

Deposits are a vital aspect of our cooperative's finances, offering competitive interest rates to customers. They're grouped into various schemes like term deposits and recurring deposits, with loans available against them. Deposits can be renewed or closed upon maturity, though early closures incur reduced interest rates. This approach balances member flexibility with financial principles.



Chipsapp Technologies Pvt Ltd.,



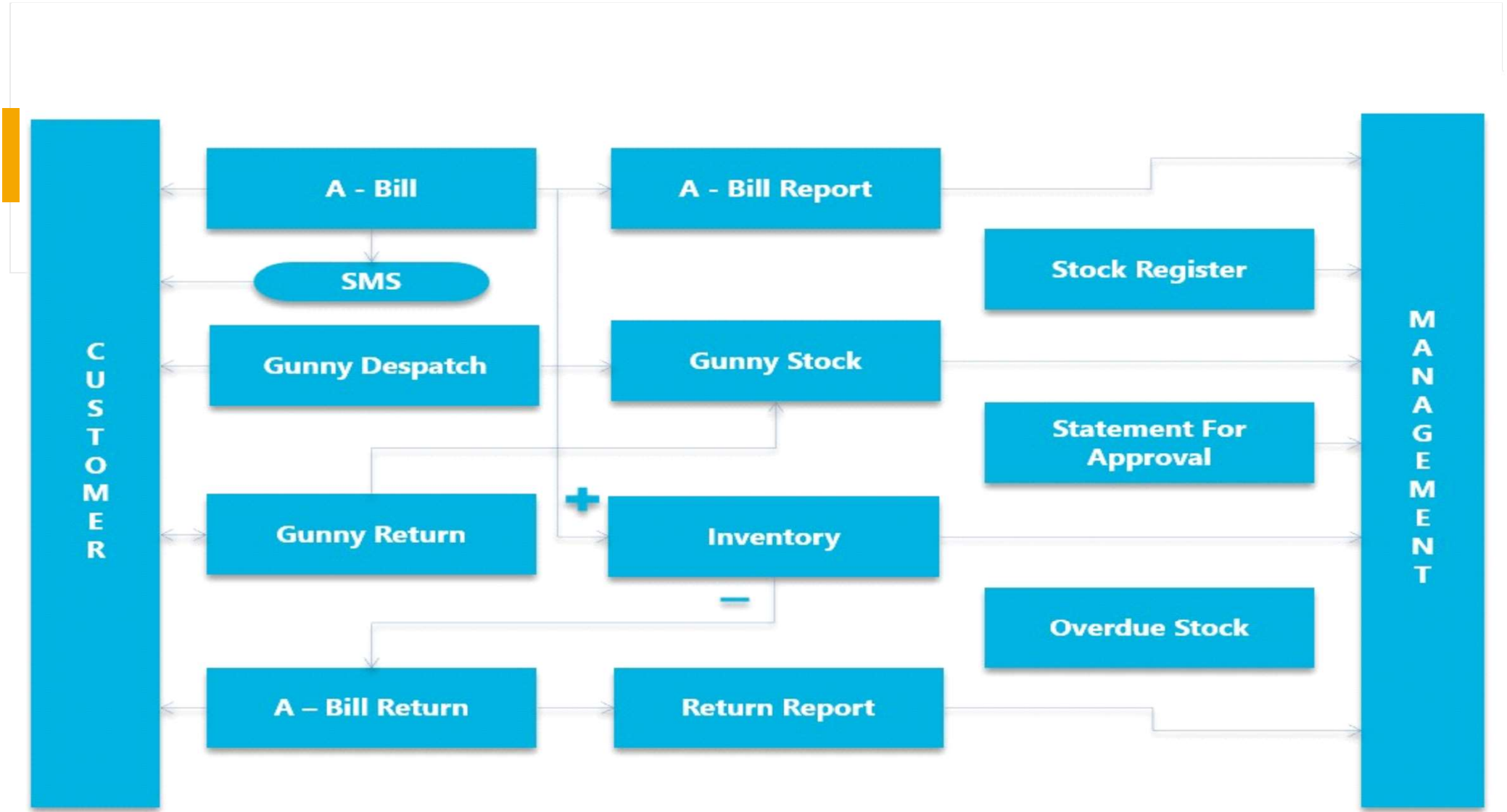


Features:

- Bill prints on pre-printed stationery: Filling the empty part of the bill from the computer.
- Individual Weight or Overall Weight entry option.
- Automatic rise in inventory stocks.
- Goods Return (A-Bill Return).
- Address Print at the back of customer copy, thereby reducing handwritten work.
- SMS can be configured as per the directives of the cooperative body.
- Weight and stock statement generated to be given to APMC.
- Godown entry option, so that stocks are easily located.
- Track of new gunny given to customers.
- Gunny Stock Report.
- Bag no. Entry automated.
- Godown Shift is made easy thereby reducing operational cost.
- Agency Management.
- Multiple types of stock reports.
- Stock Aging Reports.

A-BILL

When a cooperative receives products such as Areca Nuts from a customer, they issue a bill known as an A-Bill, which triggers the creation of inventory stocks. A-Bill entry is essential for tender processing. In cases where customer satisfaction is not met, goods can be returned, documented through an A-Bill Return Entry, resulting in a reduction of inventory stocks.



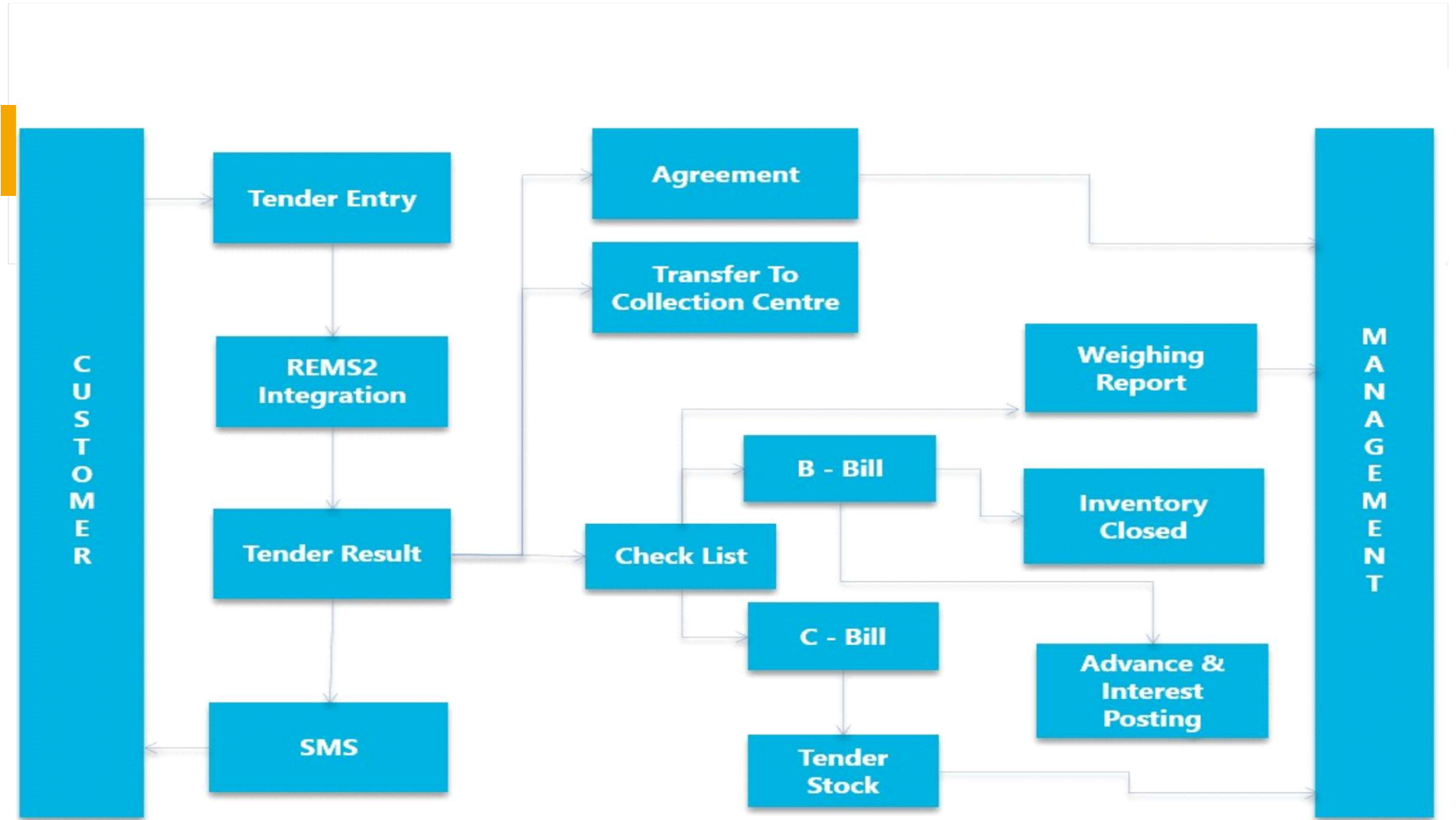


Features:

- Order Entry.
- Different colours for lots that are declared, undeclared and cancelled.
- Part Bags and stock check options.
- Additional option to mention lot line number and lot ID.
- Automatic Weight assigned from A-Bill based on the number of bags and weight sold.
- Option to add or less gunny bags to traders upon standardization of weight.
- SMS Generation.
- Weighing Report.
- Agreement for a variety of purposes.
- Tender Results can be transferred to collection centres.
- Automatic B-Bill and C-Bill Creation with all the necessary calculations.
- Automatic ledger postings.
- Automatic calculation and posting of advances and their interest deduction.
- Sale Agreement Creation.
- Tender Forms for Merchants.

TENDER & REMS INTEGRATION

The tender process in the commission agent business involves managing a high volume of lots, which we've streamlined with our automated system. Clients submit their stock for tender, traders bid via the REMS website, and winners are declared. Our software seamlessly integrates bid data and generates agreement reports. SMS notifications provide rate details to members. Once sales are confirmed, weighing reports are generated, followed by automated bill creation for efficient stock management.



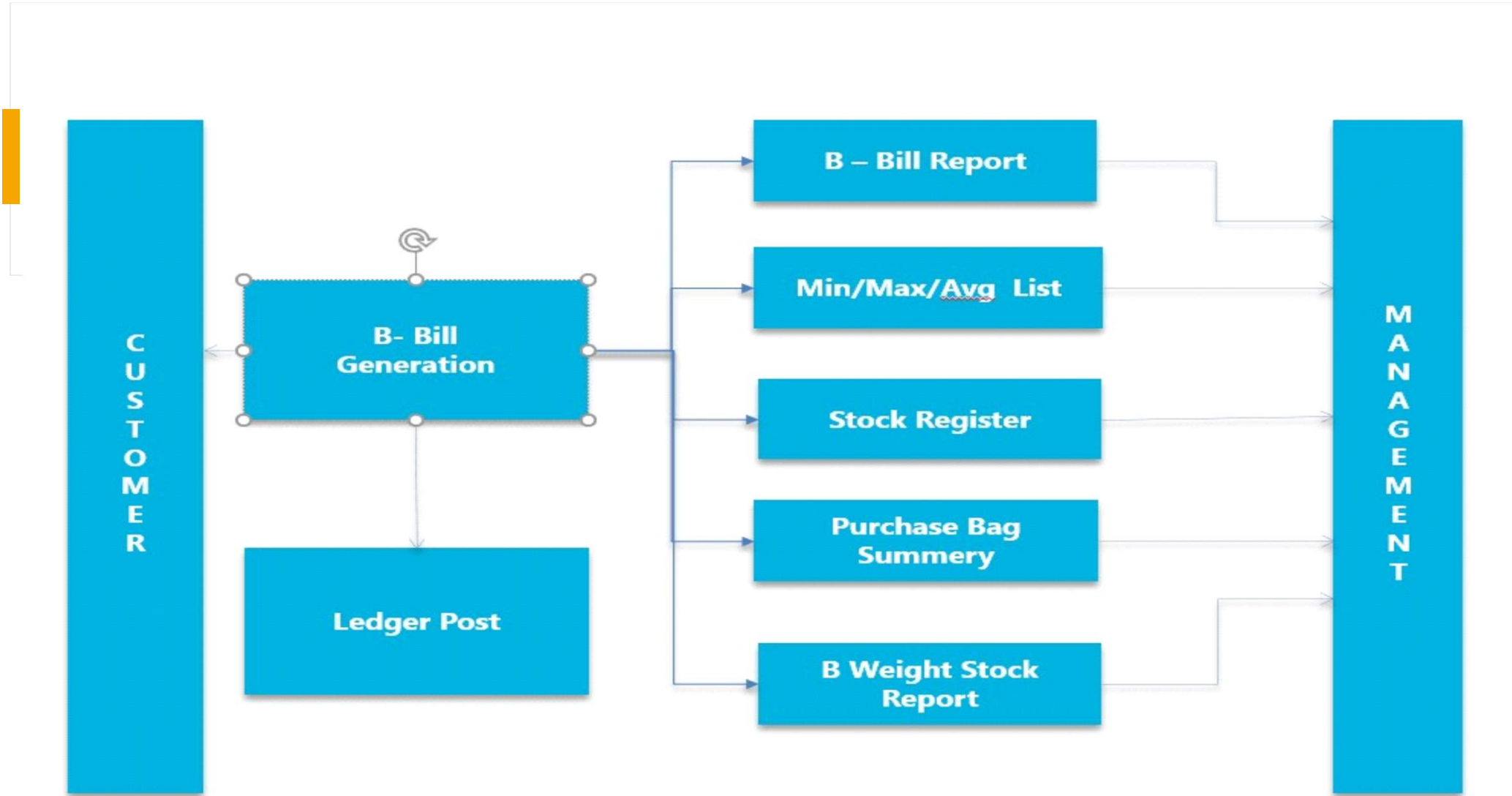


Features:

- Bill prints on pre-printed stationery.
- Automatic bill generation.
- Automatic additional calculation.
- Reverse Charge Mechanisms of GST if applicable.
- Automatic Postings based on priority.

B-BILL

Following a tender, the bill provided to the customer is referred to as a B-Bill. Additional charges such as Hamali/labourer and Weighment are factored into the Product Amount. These supplementary charges are sourced from configurable settings accessible to cooperative members, ensuring adaptability and flexibility within defined permissions.



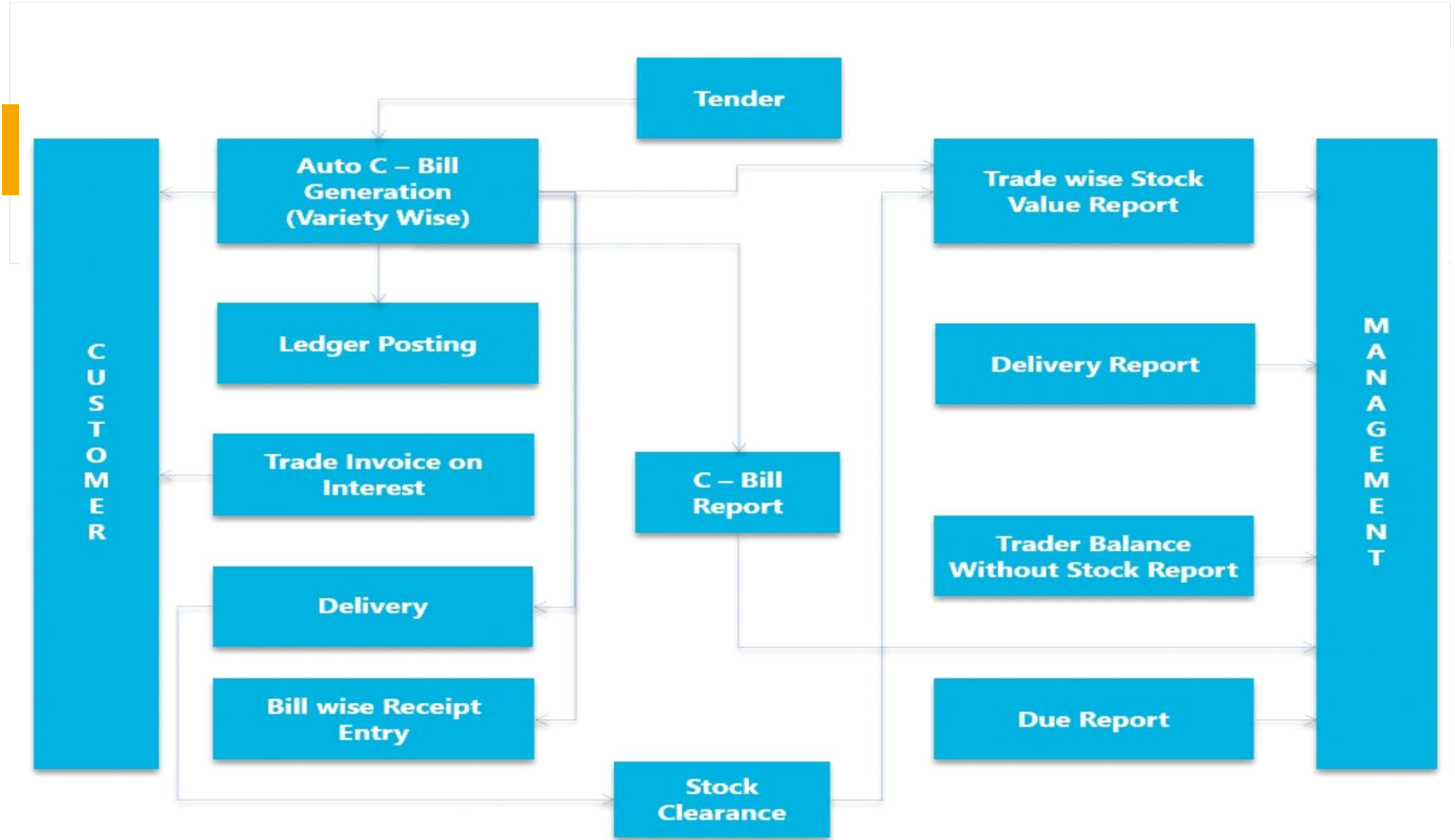


C-BILL

Features:

- Transport Details & Payment details option as per the norms of E-Invoice and E-Way Bill.
- Automatic E-Invoice generation. IRN is generated upon e-invoice generation. Bulk E-Invoice Generation.
- Automatic E-Way bill generation. EWB No is generated.
- Bill prints on pre-printed stationery or in A4 with a QR Code embedded into it, IRN and acknowledgement number printed.
- Ready GSTR-1 reports with JSON file download option.
- Automatic additional calculation.
- Dynamic C-Bill Report, with various filters.
- Automatic CESS Report generation.
- Delivery and stock clearance reduce inventory stocks of traders.
- Delivery Notes and stock clearance are easy to use.
- Delivery Notes and stock clearance printing options can be customized.

Following a tender, traders receive a C-Bill detailing charges like Hamali/labourer fees, Weighment costs, and more, added to the Product Amount. These charges are sourced from customizable settings. For traders providing their gunny bags, a simple setting adjustment is available. The software integrates E-Invoice and E-Way bill functionalities. Delivery and stock clearance details are updated upon dispatch, streamlining stock management for traders.



PURCHASE MODULES

In the realm of trading activities, products procurement unfolds across various avenues, each tailored to meet distinct requirements:

- RD Procurement: Acquisition transpires internally within the cooperative or from GST-registered societies dispersed across different locales.
- Gunny Procurement: Procurement of gunny bags sourced from authorized dealers.
- Packaging Material Procurement: Acquisition of packaging essentials such as jute wire, plastic bags, etc., from certified suppliers.
- URD Procurement/Direct Procurement: Direct acquisition of Areca nut from customers or farmers.
- Interstate Procurement: Sourcing from registered societies located in other states.

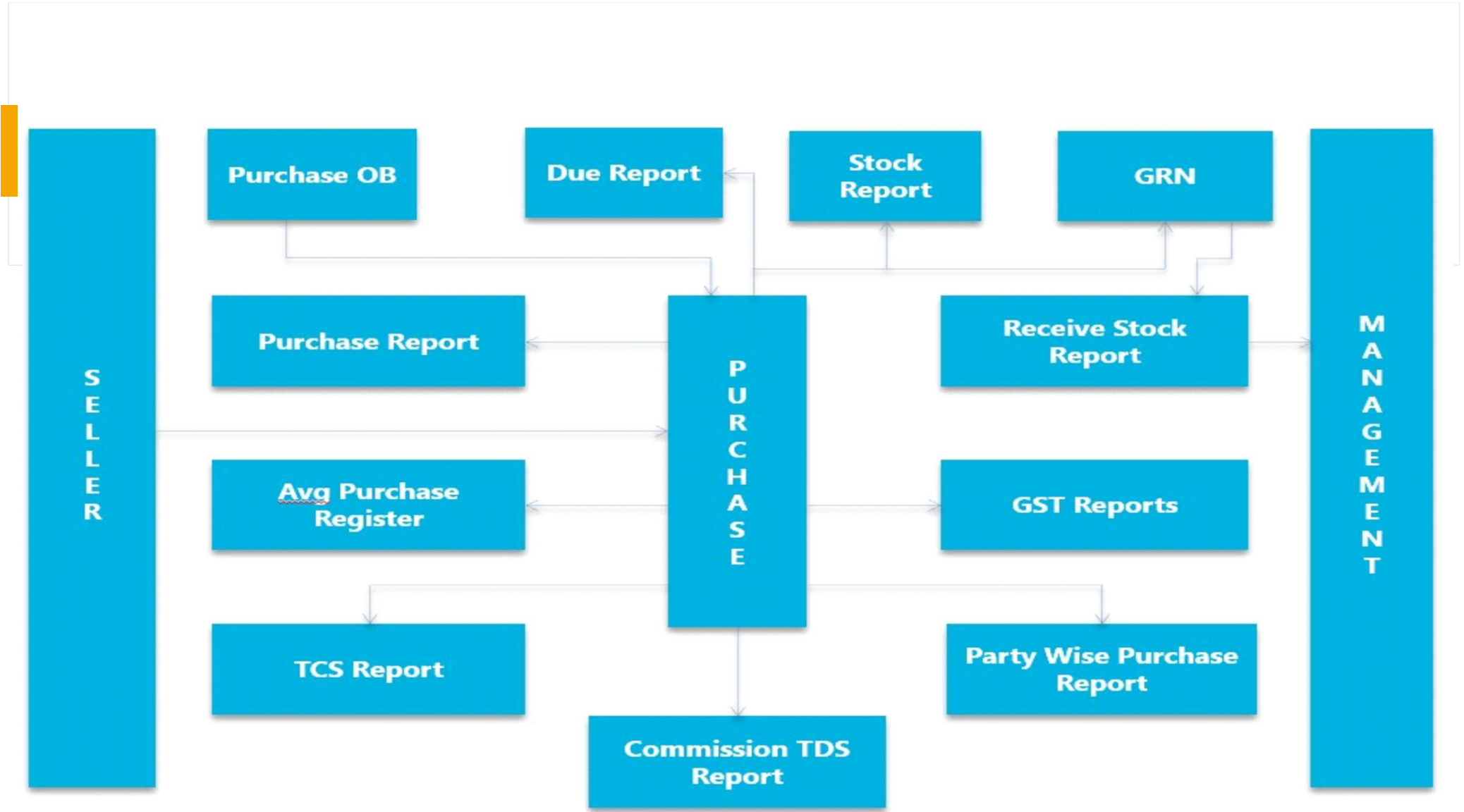
These diverse procurement channels bolster our trading inventory, fortifying our stockpile. After acquisition, diligent sorting and grading procedures ensure readiness for sale. An automated system computes average procurement, furnishing the cooperative body with insights into prevailing stock dynamics. Tax calculations are meticulously tailored to the origin state of the procurement, ensuring compliance and accuracy.



FEATURES



- Easy user interface.
- Purchase Bag No entry options.
- Automatic tax calculation based on the state from which Areca nut is purchased.
- Automatic ledger postings.
- Sundry Creditor wise purchase report.
- Purchase Report with many filter options.
- Sorting purchases from commission agents and traders.
- Commission TDS report.
- Purchase TDS report.
- Automatic average calculation.
- GST-2A report.
- Due Report to enable the co-operative to make payments within the credit days, therefore avoiding the interest to be paid.
- Payment reminders as notifications.
- Entry of Goods Receipt(GRN/Receive Stock) purchase bill and bag number wise, enable the co-operative to analyse the stock available at various other societies that they have purchased Areca nut from.
- Receive Stock Report determines the stock available at each commission agent.
- The closing stock value of Areca nut is calculated based on the FIFO(First-in-First-out) technique.
- Direct Purchase Units Stock Management.
- Grading and sorting Techniques Before the Sale of Goods.



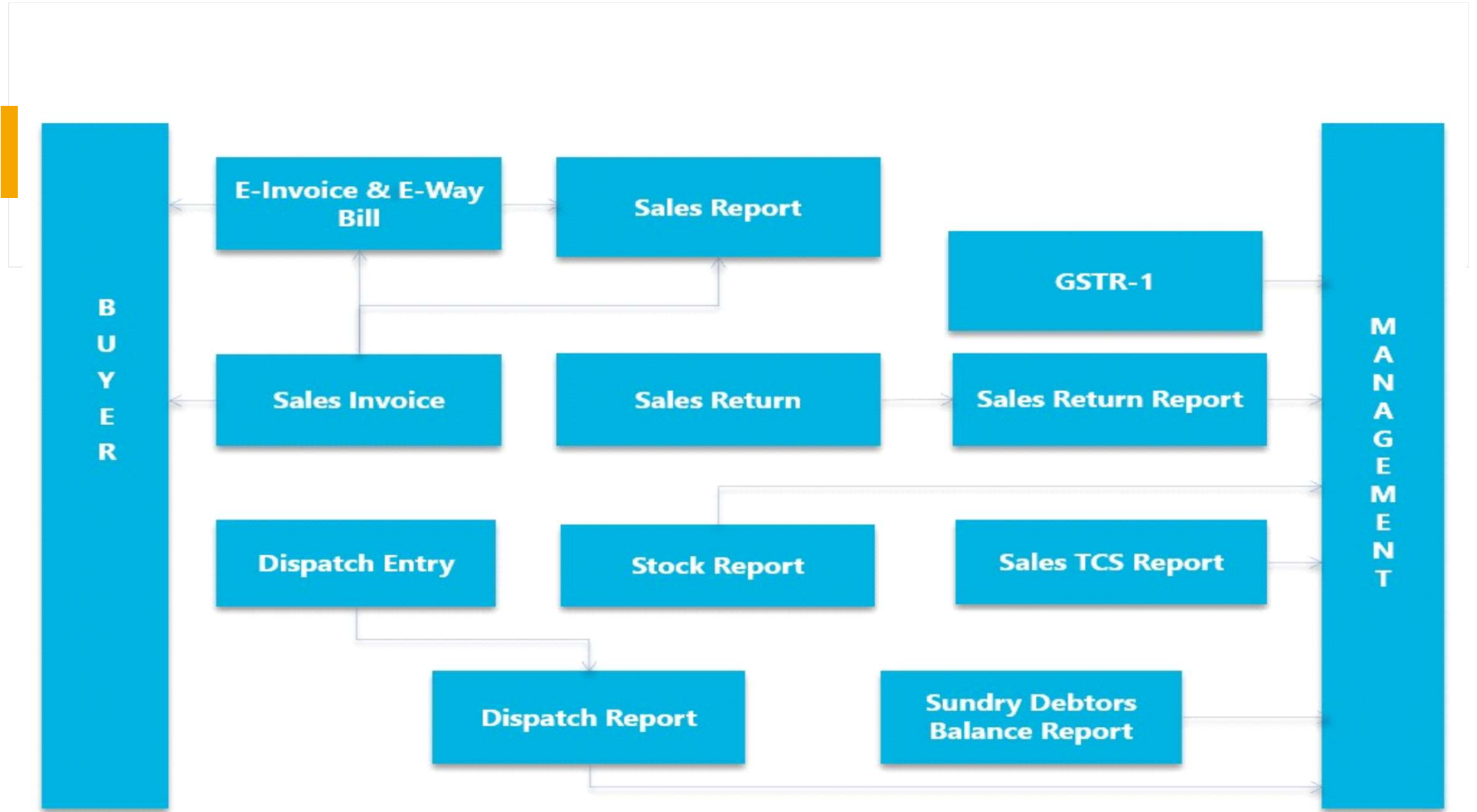
SALES MODULES



In the trading division, our sales operation module unfolds seamlessly. Each dispatch order marks a reduction in the stocks, accompanied by the generation of E-invoices and E-way bills tailored to the transaction. Tax calculations are meticulously aligned with the destination state of the sale, ensuring compliance and accuracy throughout.

Features :

- Order Entry and management-based approval.
- Easy user interface.
- Transport Details and payment details option as per the norms of E-Invoice and E-Way Bill.
- Automatic E-Invoice generation. IRN is generated upon e-invoice generation.
- Automatic E-Way bill generation. EWB No is generated.
- Bill print with QR Code embedded into it IRN and acknowledgement number printed.
- Ready GSTR-1 reports with JSON file download option.
- Automatic additional calculation.
- Automatic ledger postings.
- Sales Reports with many filters.
- Automatic trading stock reduction.
- Sales TCS report.
- Debtors Aging Report.



SUPERMARKET

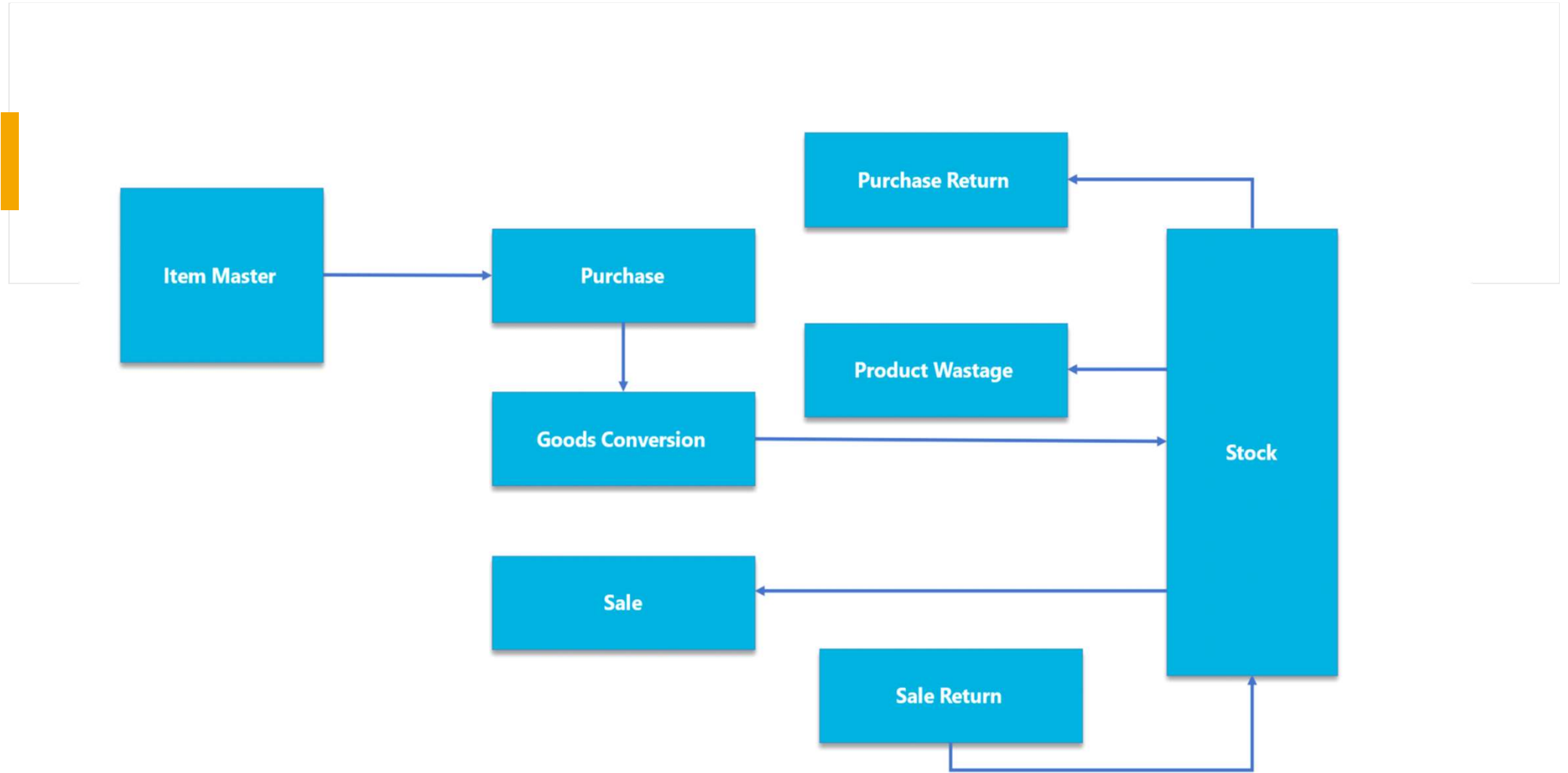


Supermarkets offer a diverse array of products to cater to consumer preferences. Managing this extensive range demands a systematic approach. Beginning with procurement from vendors or in-house manufacturing, the goods undergo batch processing for enhanced traceability and quality control. Given the volume of certain items, meticulous packing and stock management protocols are essential. Vigilant monitoring of expiry dates ensures optimal inventory turnover and mitigates losses. Additionally, effective counter management remains pivotal in ensuring smooth operations within supermarkets.

SUPERMARKET MODULES

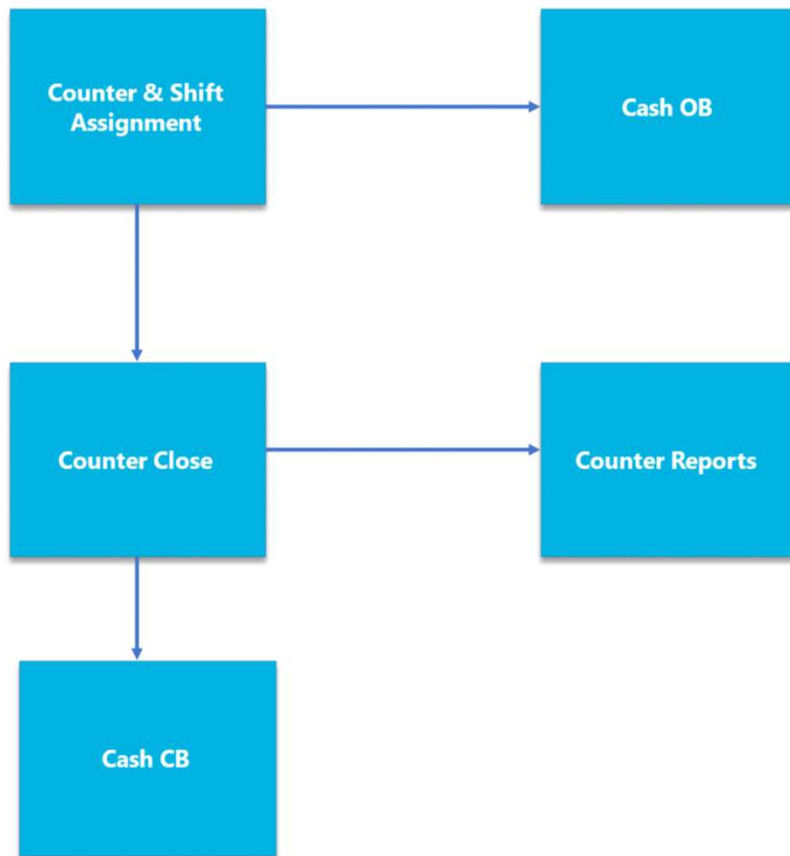
Features:

- Unit Conversions in Master.
- Cost Price and selling price with Profit Margins.
- Counter Management.
- Closing Stock Calculations FIFO/Average/Default methods.
- Rewards Management.
- Rewards Summary.
- Cash Management.
- Multiple Payment Types.
- Counter Wise Reports.
- Staff-wise reports.
- Due Date Reminders.
- Batch Processing Report.
- Stock Aging Report.
- Graphical Report.
- Waste Management.
- Returns Management.
- The same can be implemented in other similar sectors such as the Sale of Home Appliances & Tyres and furniture's sale.



Product Stock Management

Counter Management



Reward Points Calculated

Reward Points Credit

Reward Points Used

Reward Points Management

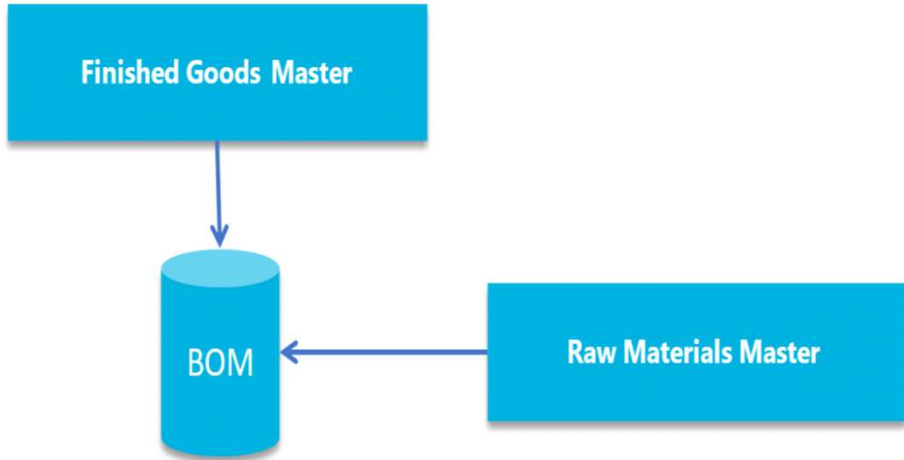
MANUFACTURING MODULES

Manufacturing is a multifaceted journey that encompasses a series of intricate steps, starting from the procurement of raw materials to the production process, packaging of the finished goods, and ultimately, the sale of the packaged products. Each phase involves a myriad of steps, demanding meticulous attention to detail. A well-integrated ERP system serves as the backbone, facilitating seamless tracking and management across the entire spectrum of operations.



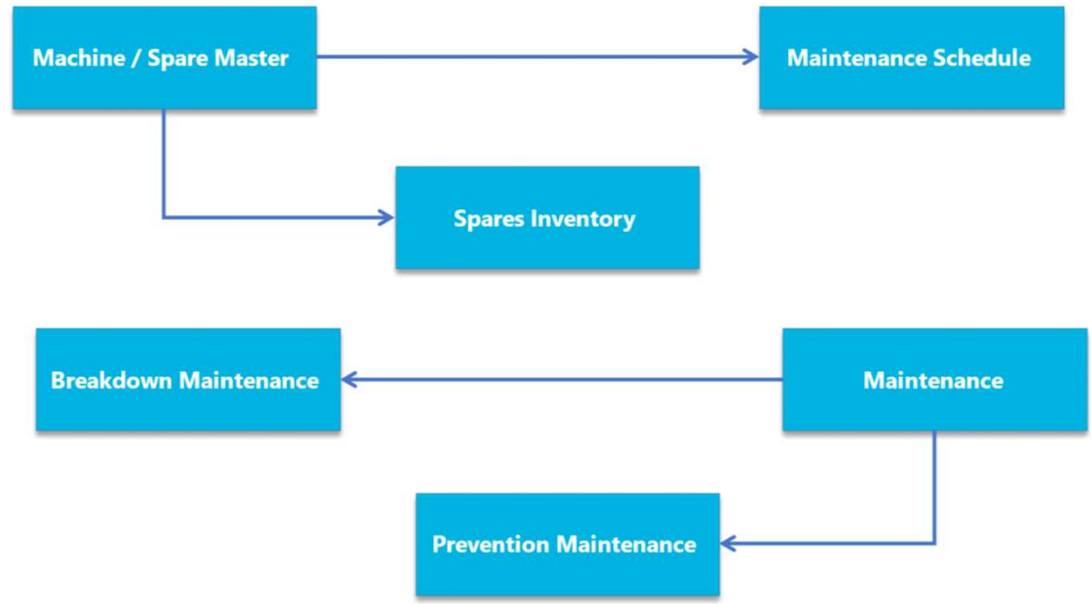
Features:

- End-to-end solution.
- Customized to the needs.
- User Friendly.
- Modular Approach.
- Vendor Management.
- Customer Management.
- Multiple Levels Authorization.
- Each department works in a separate structure. The data flow is managed accordingly.
- Role-based
- Robust Inventory Management.
- Material Tracking.
- Process Tracking.
- Bill of Material Conceptualized.
- Quality Checks at each stage.
- Super Stockist and Stockist Management.
- CRM Enabled.
- Various Marketing Techniques.
- Packaging.
- Purchase & Procurement Management.
- Standard Accounting Included.
- Stock Aging.
- Employee Performance.
- Production Management.
- The same can be implemented in various manufacturing systems.

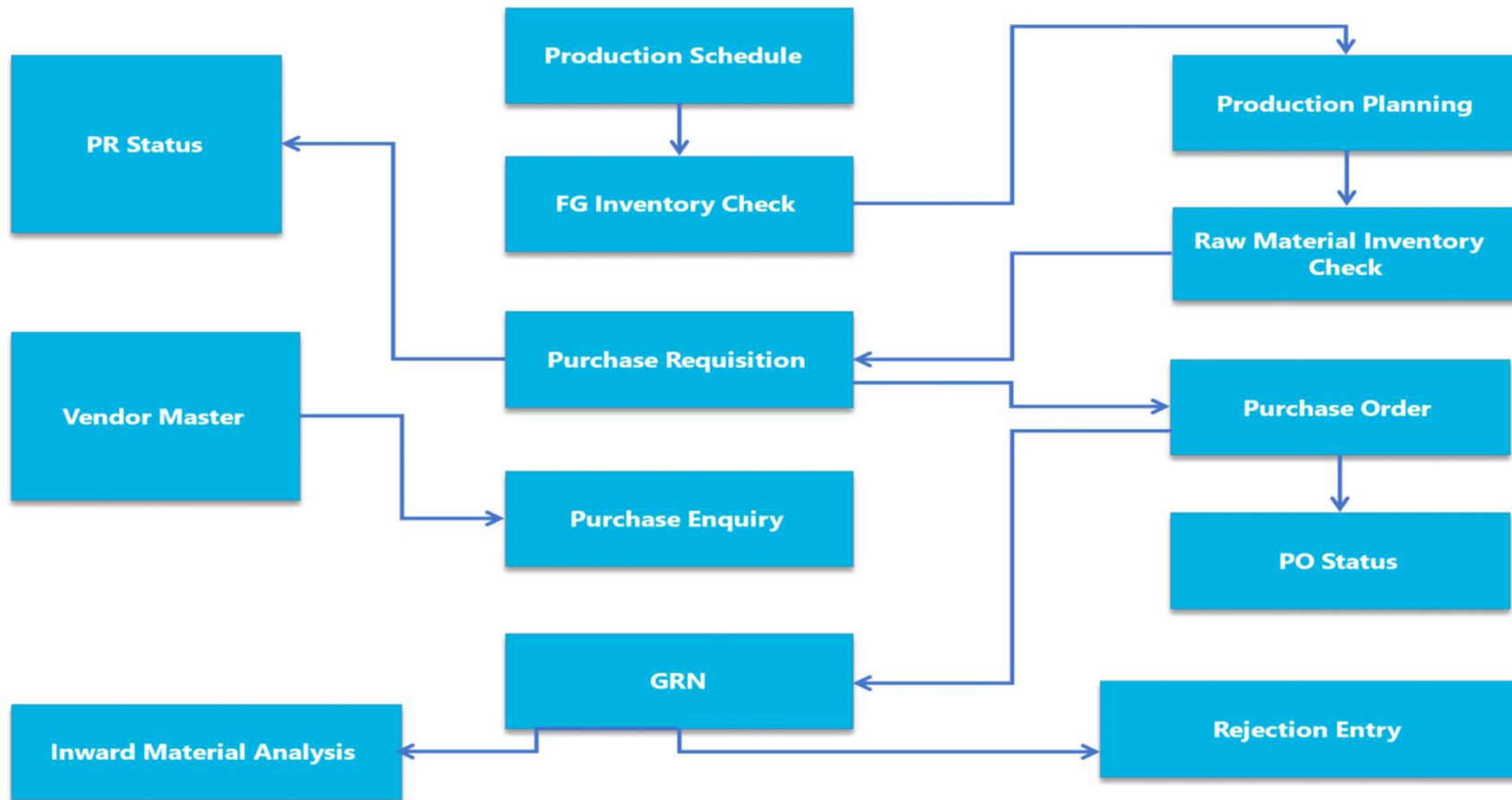


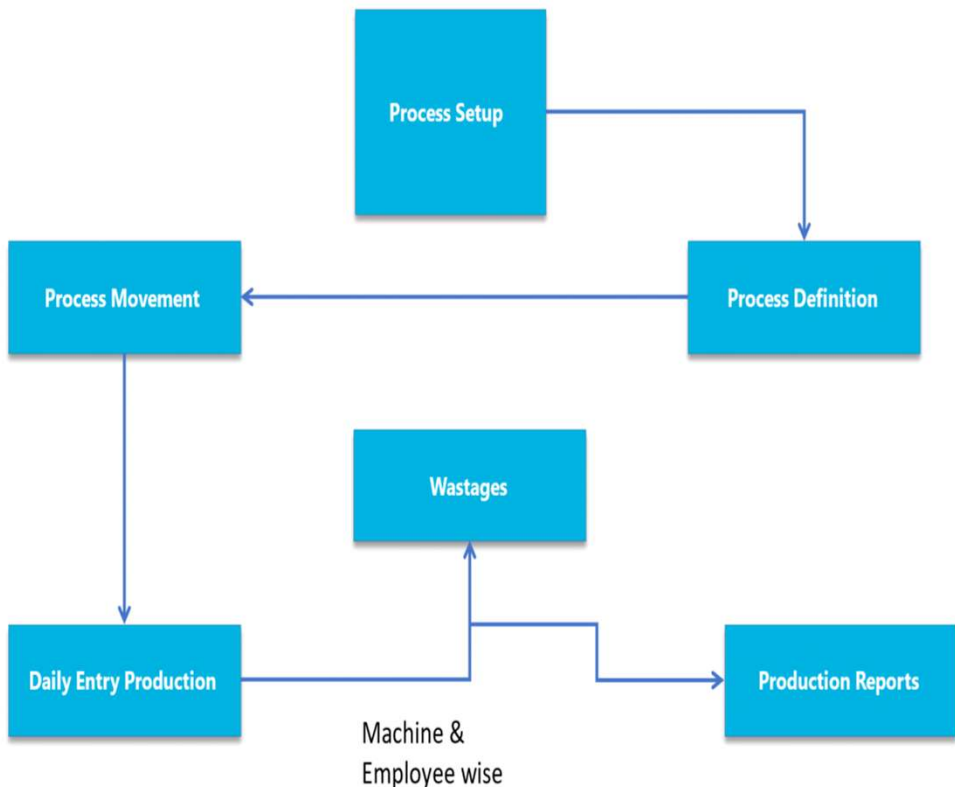
Bill Of Materials

Machines and Spares



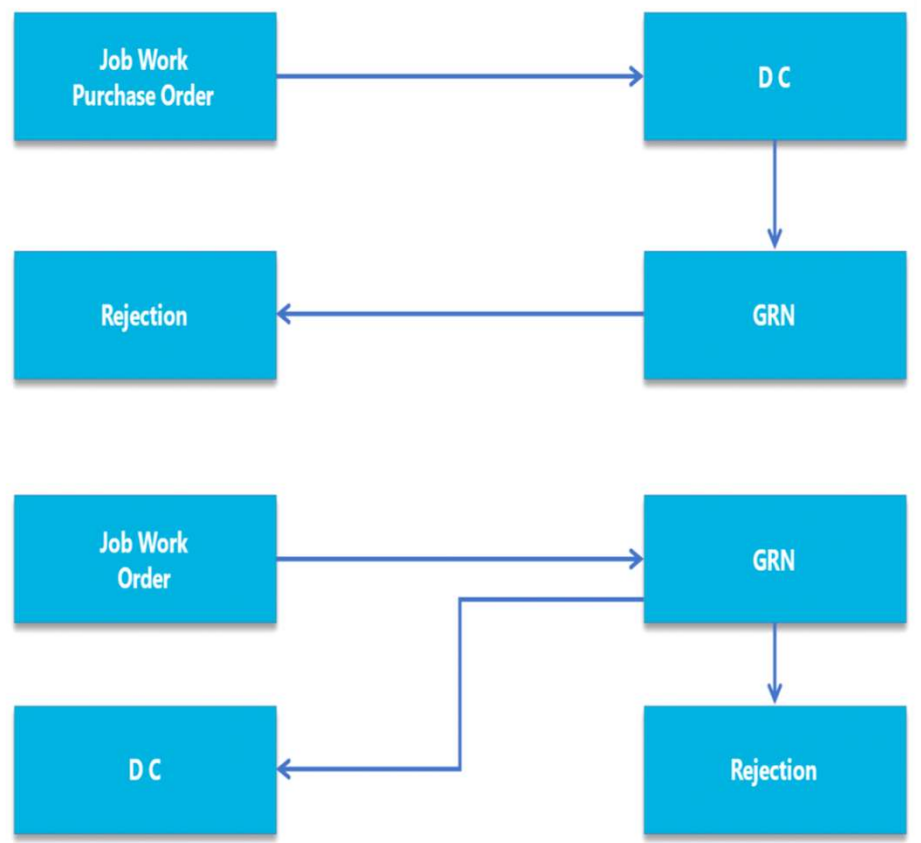
Purchase and Procurement and Inventory with Quality Check.





Production Flow

Job Work/Sub-contract Order Management



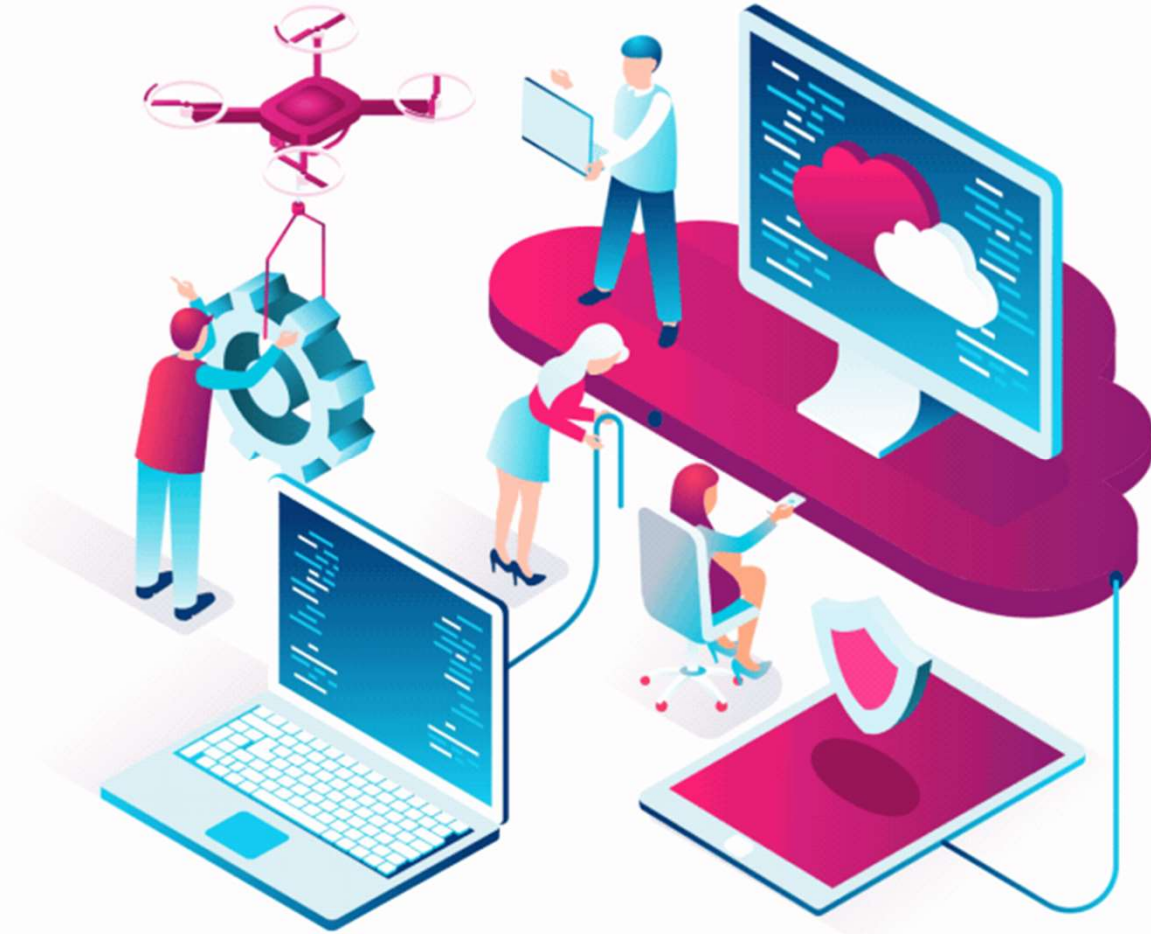
CUSTOMISED SOLUTION

- We prioritize building software tailored to meet the specific needs of organizations, rather than adopting a one-size-fits-all approach.
- Through extensive customization efforts, we've crafted over 2000+ modules catering to diverse requirements.
- We pride ourselves on offering a resounding "YES" to every technical challenge presented by organizations.
- We provide seamless integrations including SMS, Reading, and E-invoice APIs to enhance functionality.
- Our software/solution is highly adaptable, accommodating a wide range of organizational requirements, including but not limited to Gold Section Management, Hospital Management, Health Center operations, Pharmacy management, Rice Mill functionalities, Agro-related activities, Hotel and Guest House management, and more.

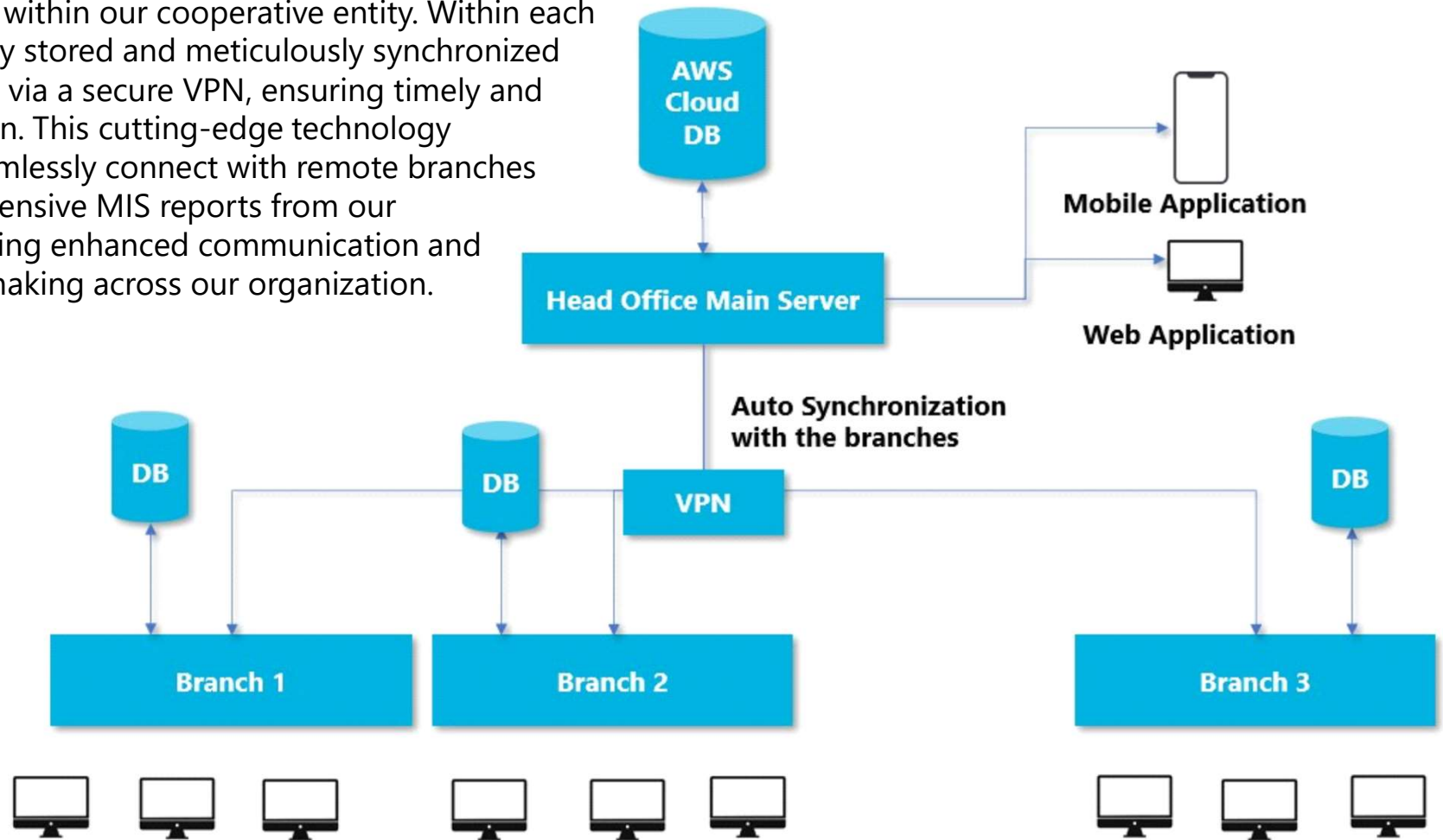


HYBRID BRANCH MANAGEMENT

Facilitating seamless inter-branch transfers is an integral aspect of our operational efficiency. Our system ensures effortless transfer of stocks and transactions between branches, streamlining processes for enhanced productivity. Moreover, the comprehensive visibility of branch data at our Head Office provides a centralized platform for informed decision-making and strategic management.



The diagram presented illustrates the hierarchical structure of branch organization within our cooperative entity. Within each branch, data is locally stored and meticulously synchronized with the main server via a secure VPN, ensuring timely and accurate transmission. This cutting-edge technology empowers us to seamlessly connect with remote branches and access comprehensive MIS reports from our headquarters, fostering enhanced communication and informed decision-making across our organization.

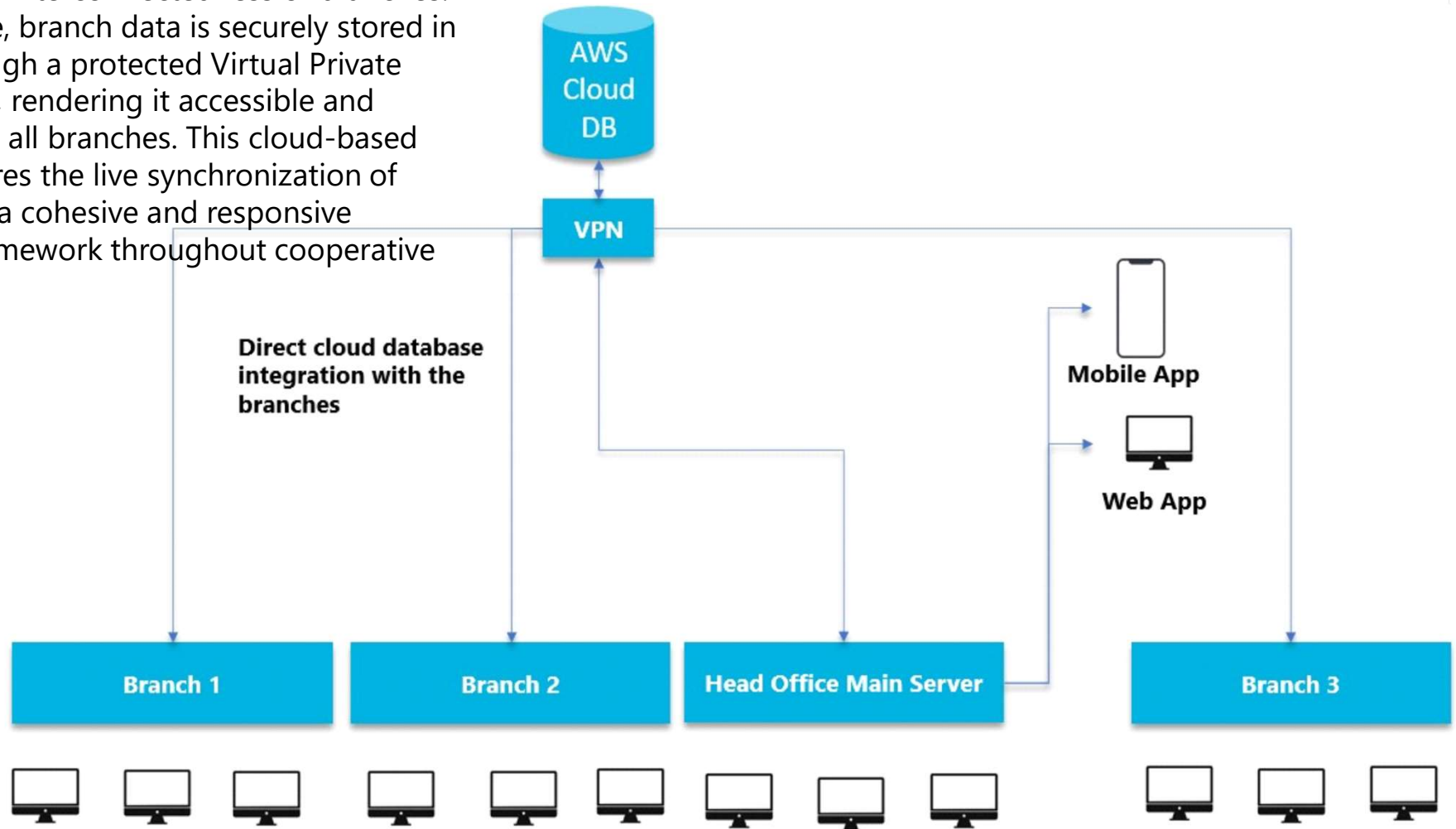


CORE BRANCH MANAGEMENT

In the realm of core branch management, our approach entails securely storing all data in the cloud, ensuring robust protection and accessibility. However, each branch needs to maintain a continuous internet connection to leverage this system effectively. This connectivity serves as the lifeline that enables seamless access to vital resources and facilitates real-time collaboration, empowering our branches to operate with efficiency and agility.



The depicted diagram illustrates the organizational flow within the cooperative entity, showcasing the interconnectedness of branches. In this structure, branch data is securely stored in the cloud through a protected Virtual Private Network (VPN), rendering it accessible and dynamic across all branches. This cloud-based approach ensures the live synchronization of data, fostering a cohesive and responsive operational framework throughout cooperative network.



STANDING INSTRUCTIONS

Standing Instructions, abbreviated as "SI," represent an automated process configured to execute periodically without the need for human intervention. This streamlined system is particularly valuable in automating tasks such as the automatic posting of interest to Savings Accounts. By leveraging standing instructions, financial institutions can ensure seamless and efficient management of interest payments, enhancing operational efficiency and customer satisfaction through automated monthly and quarterly posting, and scheduled payments.



Features:

- No user intervention
- Runs in the background, so users can work simultaneously.
- Any number of instructions can be created.
- Fully automatic process.
- Hassle-free.

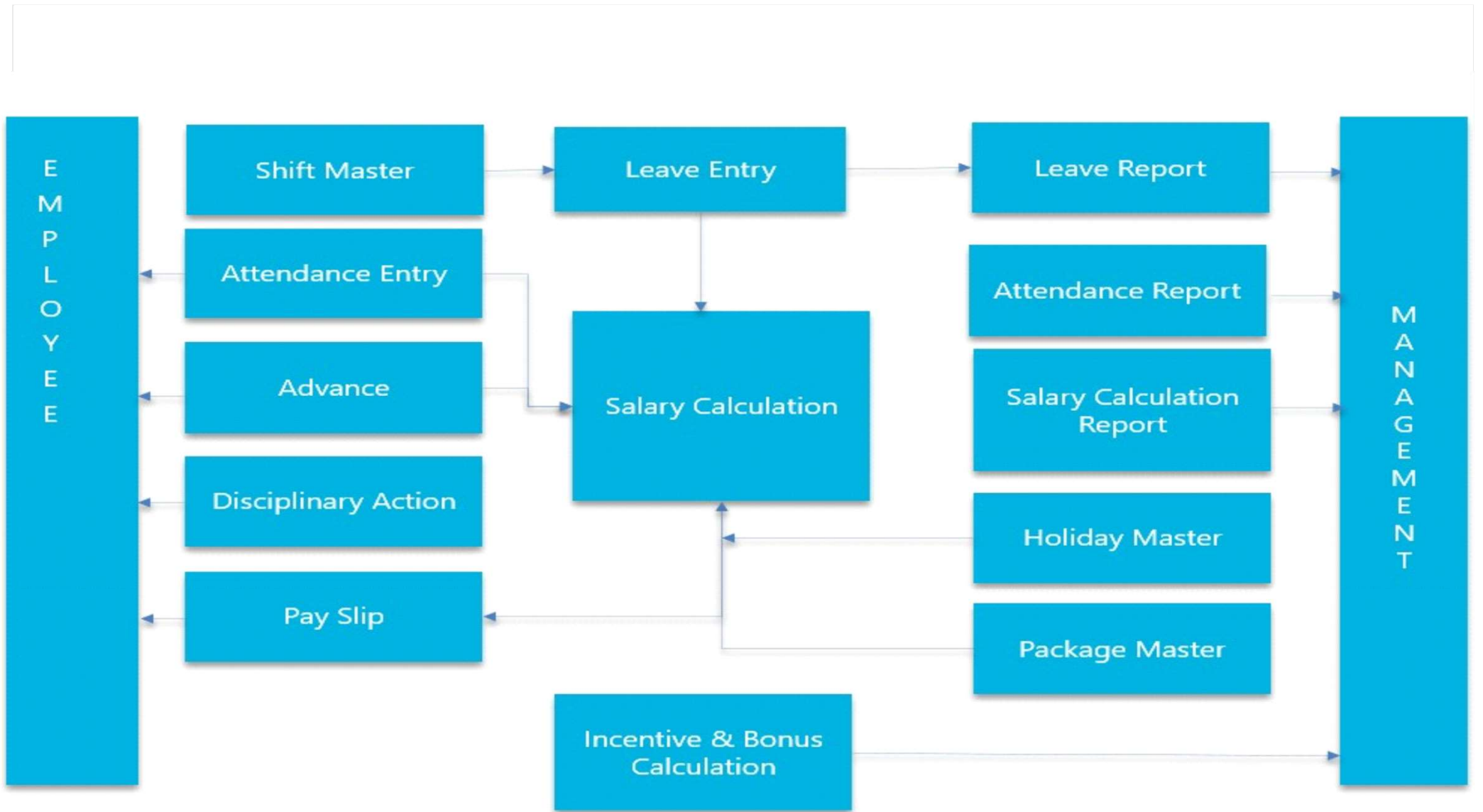
HUMAN RESOURCE MANAGEMENT

Human Resource Management (HRM) encompasses vital functions such as Employee Management, Attendance Management, Payroll Management, and Leave Management, constituting a cornerstone of any cooperative body's operations. Among these functions, Attendance Management stands out as crucial for ensuring workforce efficiency and accountability. Leveraging cutting-edge technology, attendance entry can seamlessly integrate with Bio-Metric machines, significantly reducing entry time while enhancing accuracy and reliability. This integration streamlines operations, empowering cooperative bodies to effectively manage their human capital and optimize organizational performance.



Features :

- Automatic Attendance from Bio-Metric machine.
- Leave Validations.
- Automatic calculation of salary components such as PF, ESI etc.
- Deductions based on the package selected for employees.
- Automatic salary postings.
- Automatic Advance Deduction.
- Disciplinary records maintained.
- Incentive and Bonus Calculation.
- ESI and PF Report.
- Absenteeism Report.
- Customized pay slip generation.
- Salary Loan and automatic deductions on salary.
- Department/Branch Change Management.





Success Depends On Trust And Trust Dwells In Smart Work.

Chipsapp Technologies Pvt Ltd. .